

January Highlights

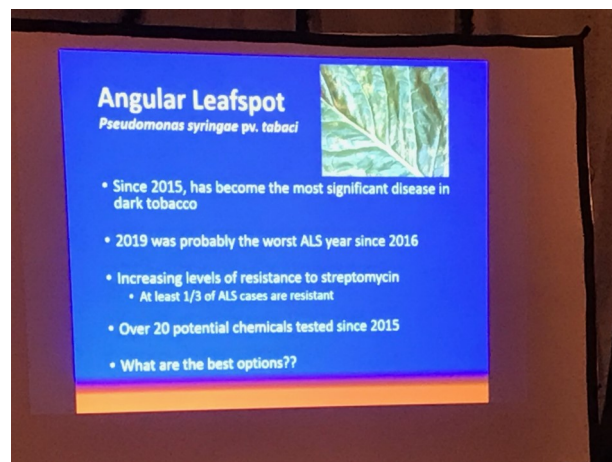
UT & TSU Cheatham County
Extension
162 John Mayfield Drive
Suite 110
Ashland City, TN 37015
615-792-4420

<http://cheatham.tennessee.edu>
Facebook: Cheatham County—UT & TSU
Extension
Twitter: CheathamCoExt
Instagram: ut_tsu_cheatham_extension

rbarron@utk.edu
Ronnie Barron, Director, Extension Agent
sknaus@utk.edu
Sierra Knaus, Extension Agent
adodd2@utk.edu
Aneta Eichler, Extension Agent
tfalick@utk.edu
Tammi Fralick, Extension Agent
kshores@utk.edu
Kathryn Forewright, Administrative Assistant

Agriculture

The month of January began our winter educational programs for producers in which research from the previous year is presented to participants. Our 2020 UT/TSU Cheatham County Extension Tobacco Growers Dinner Conference provided updates from the 2019 growing season, as well as production recommendations and opportunities for this year. Angular Leaf Spot, which has devastated many tobacco crops in our region, was one of the hot topics of discussion. Also, we helped several greenhouse vegetable growers with diagnosis and control of diseases in their crops.



4-H Youth Development



Throughout the month of January, 4-H youth across the county participated in the National Youth Science Day challenge, Game Changers. The challenge teaches participants how to use computer science to create games, solve problems and engage them with technology topics. Throughout the lesson, students were encouraged to create an unplugged game of tag using coding concepts. While coming up with creative techniques to play the game, the students were able to user test the game and problem solve any “bug” or “glitches”.

Family & Consumer Sciences

January was spent supporting our Family and Community Education programs and getting them off to a great start for 2020! Cheatham County currently has two active clubs with a membership of 29 individuals. Two members attended the Central Region FCE meeting in Rutherford County and five individuals attended our local Leadership Breakfast. Both meetings were opportunities for members to build a stronger understanding of FCE programs, receive training materials to take back to clubs and be informed in regards to state and regional due dates. Aneta Eichler, FCS Agent, presented Mediterranean Diet information at both January meetings.

Family and Community Education clubs focus on education, leadership and community service. In 2019, our local clubs collectively reported:

- over 1300 hours of volunteer time
- reaching 2700 individuals in the community
- investing over \$2,000 in community interests
- Christmas Anonymous
- Cheatham County Fair
- Safe Haven
- Postage for Soldiers
- Sr. Center luncheon
- Hats for homeless
- Baskets for City Dept.
- Meals on Wheels